



OZBREED PLANTS FOR ARCHICAD
ARCHICAD 10 USER GUIDE v1.0

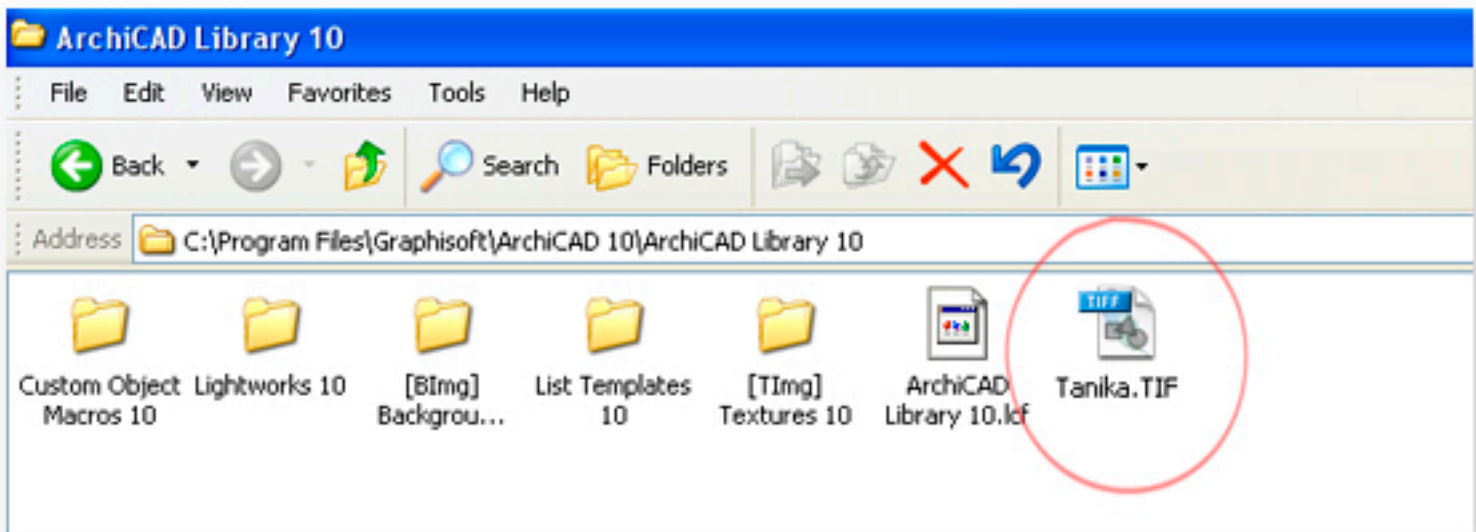


www.envirographic.com

© Enviro Graphic 2007. All rights reserved. Enviro Graphic, P O Box 381, Oneroa, Waiheke Island, Auckland 1240, New Zealand

1

Place the .TIF image files in your ArchiCAD Library

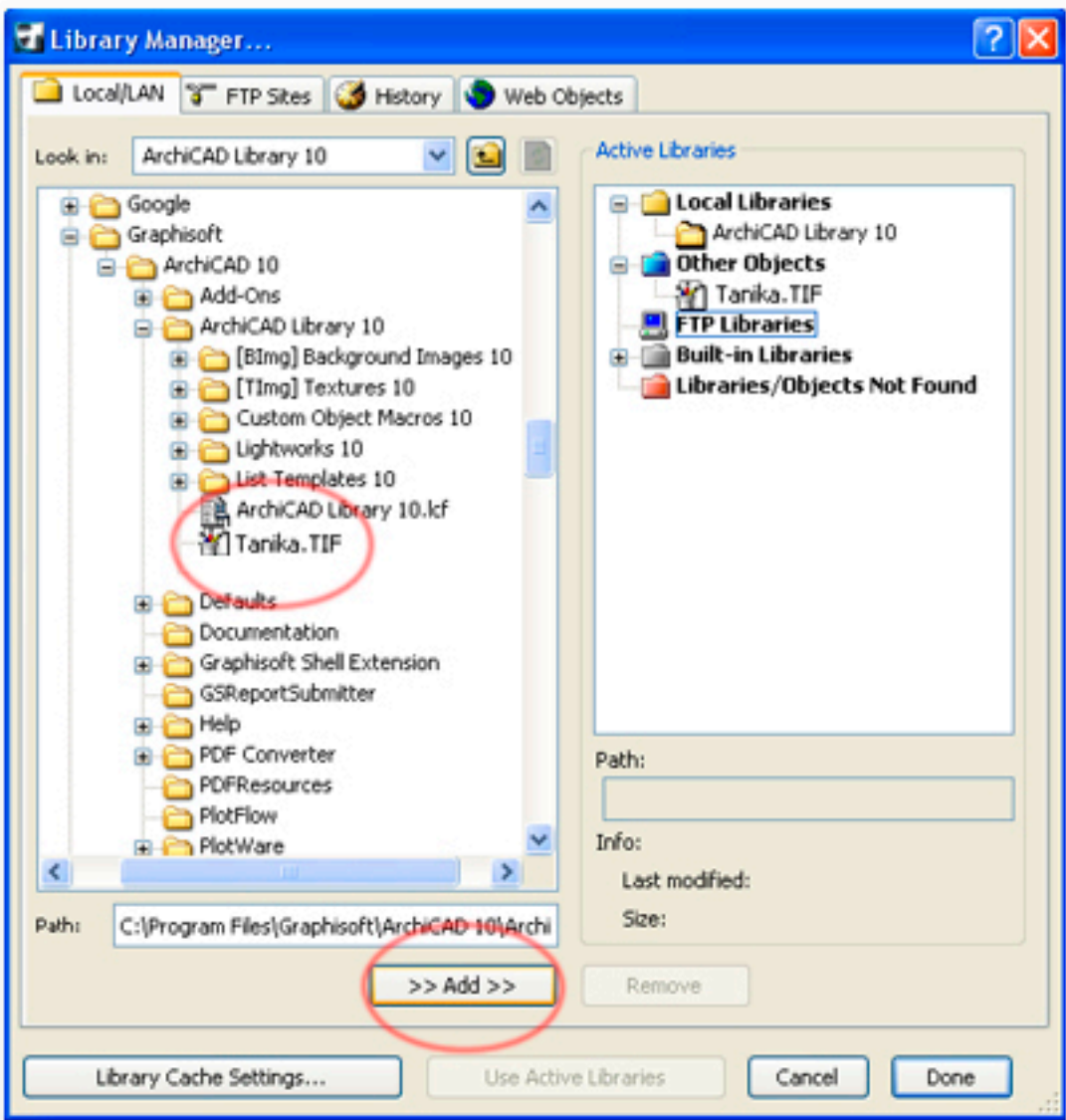
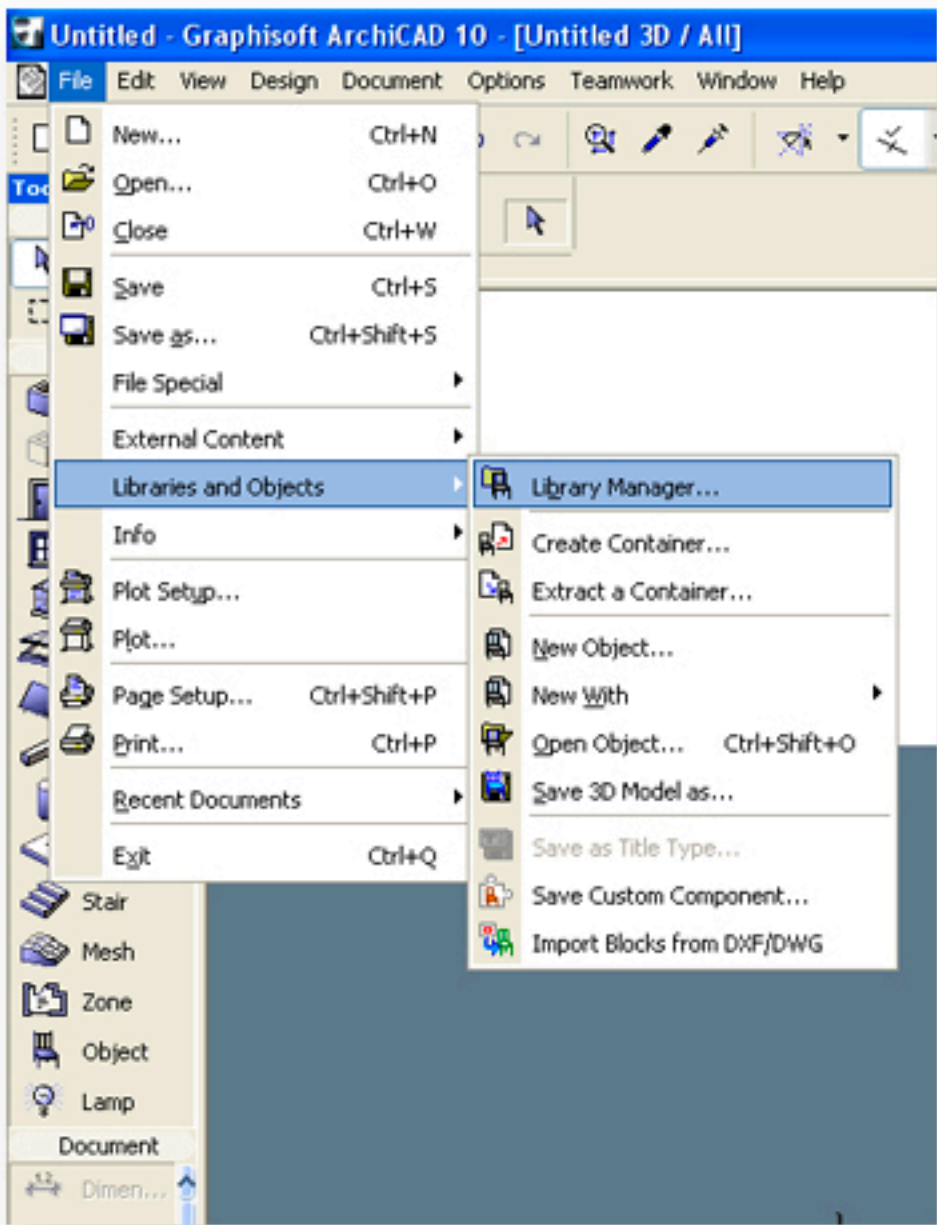


2

Open up the library manager

Using the local/LAN menu, locate the .TIF image files in the ArchiCAD Library and add them to the active libraries directory.

Click the Done button once all files have been added.



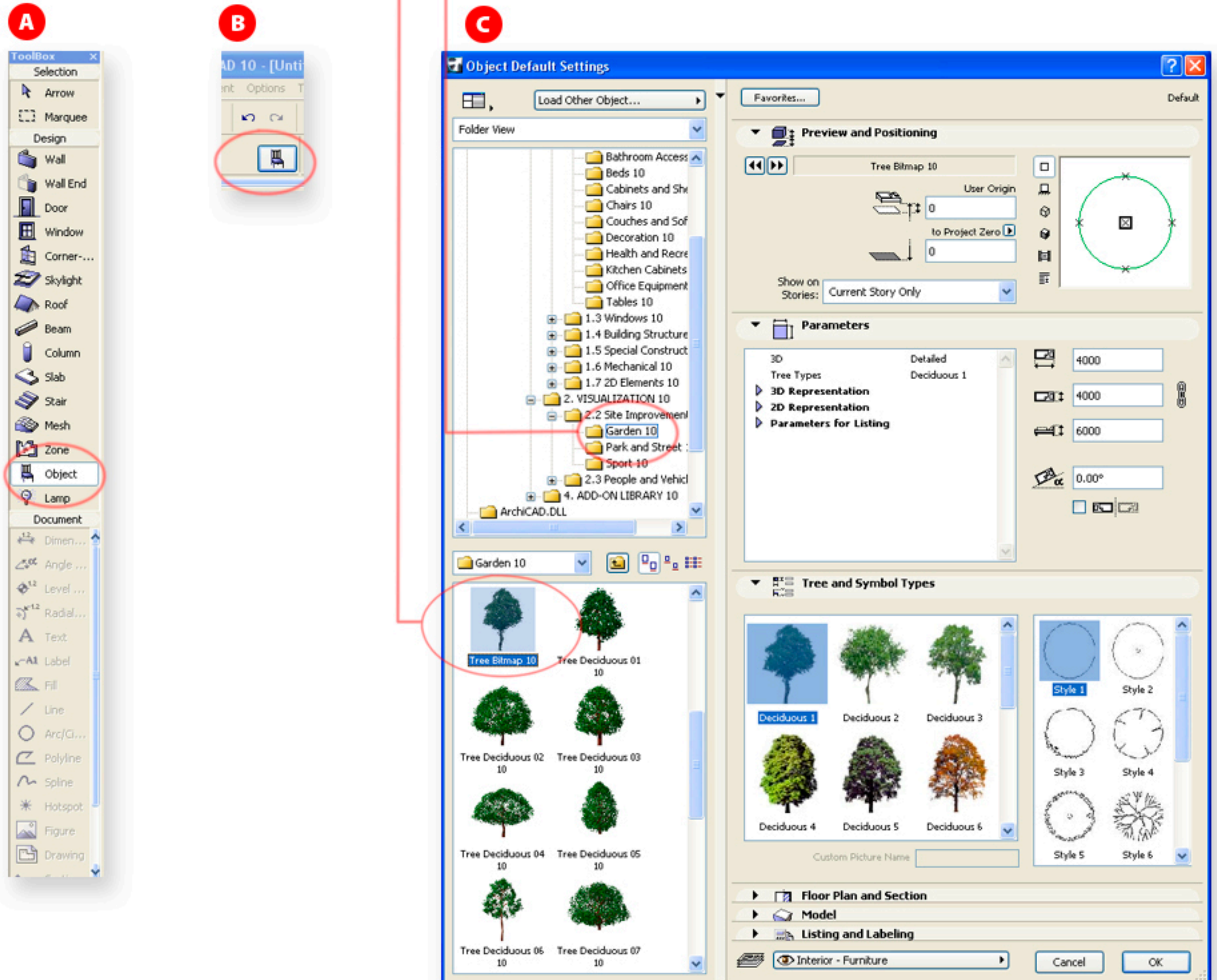
3

A. Click the "Object" button on the toolbox.

B. Click the object settings button.

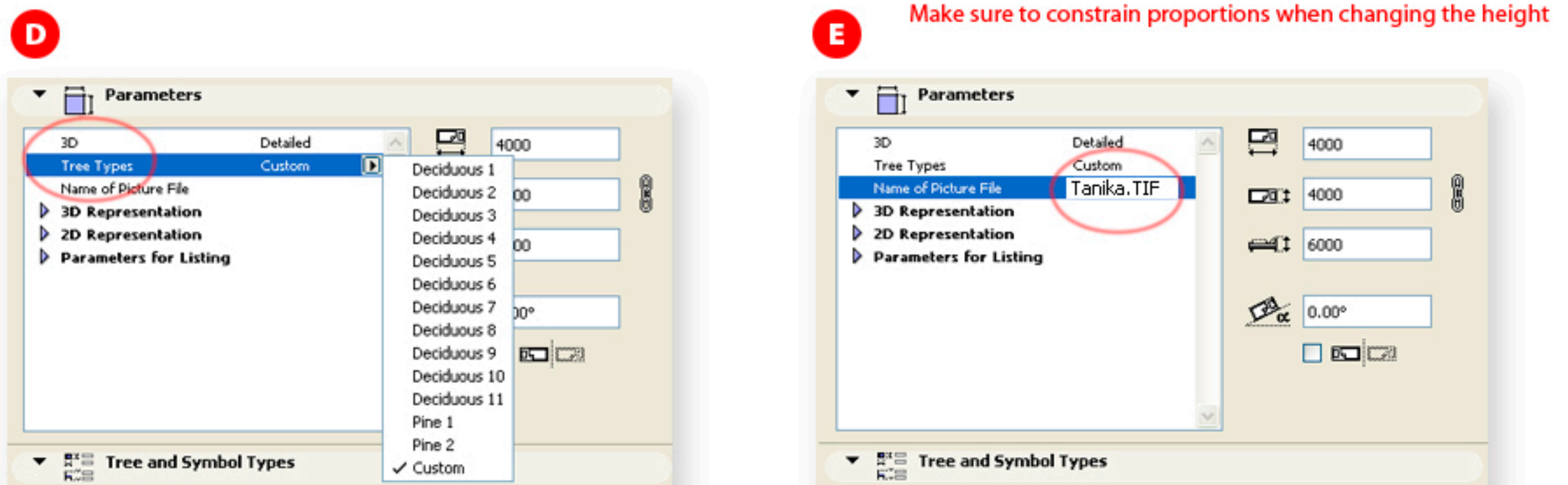
C. Open the "Garden 10" folder within the "Visualization 10\Site Improvements 10 folders".

Next, click the "Tree Bitmap 10" image from the Garden 10 scroll box.



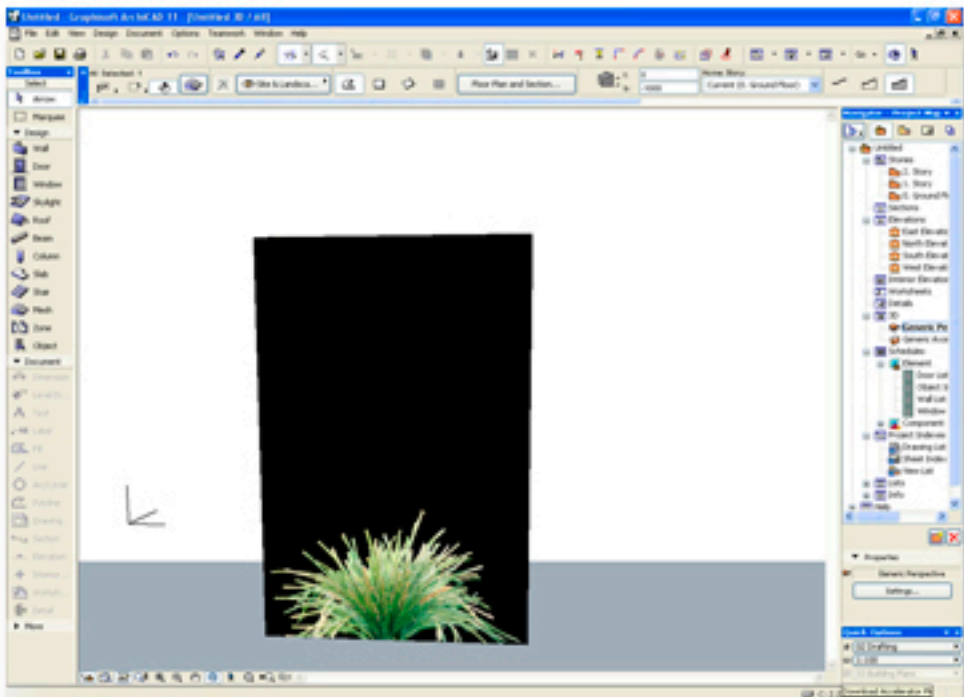
D. In the "Parameters" menu, click the "Tree Types" and choose "Custom"

E. Click "Name of Picture File" and type the exact file name of one of the tree images you placed in the library folder, in this case "Tanika.TIF". Click the "OK" button to close the object settings box.



4

Left click somewhere on your site to place the plant.
In 3d view - it should rotate to the camera. If you change the camera position, you may need to rebuild the window in order for the object to update to the new camera position.



5

Now your plant is set up, render your image.



For help or technical support, please contact info@envirographic.com